



Turn to the right and follow the footpath straight down the hill, over the stile and continue downhill through the fields. Follow the waymarker posts until reaching a bridge across the Morlais river. Cross the bridge and continue through the woodland. Just before a stile and gate turn right. Cross 2 small bridges and a kissing gate then over 2 more bridges and back into the open fields. Turn left and continue up the fields until you reach a small bridge with a stile at each end.

Take the driest route possible from the end of the bridge and from there continue diagonally across the field, aiming towards the waymarker post, and then onto the kissing gate. Cross the field to the opposite side where you will find another kissing gate.

Go through the gate, down the steps and across the bridge into the second section of woodland. The path here meanders through the woodland and eventually emerges onto the track to Penllwyn Robert. Continue uphill along the track to Cilonnen Road.

Turn right at the top of the track and follow the road for approximately 200 metres. Turn right off the road and cross a stile then follow the hard track until passing into the next field, then cross diagonally to the opposite corner where you will find 2 stiles, close together.

Continue for 20 or so metres and then turn left through the field gate. Follow the field edge down to the stile in the corner of the field.

**Take time to enjoy the fantastic views down towards Whitford Point.**

Continue down the field aiming to the left of the 2 houses at the bottom where you will find a stile. Once over the stile you will be on the common.

Follow the track down to the cross roads and continue straight on until taking a left turn down a grassy bank onto a wooded path. Here you will follow a stream that, after crossing a small wooden bridge comes out alongside Cwm Cynnar small holding.

Continue down the drive until reaching the road, then follow this down hill to the main road. **Please take care as there is no pavement.**

Take care crossing the main road and continue walking down the quieter road opposite towards the marsh.

Turn right when meeting the Marsh Road and continue back to the start point.



*Gower Landscape Partnership / City & County of Swansea  
Produced by the Countryside Access Team -  
other leaflets are available in this series*

*Photography - Phil Marshall  
going to print (June 2015).  
Information correct at time of*

**Mae'r cyhoeddiad hwn  
ar gael yn Gymraeg.**

This walk takes you through a former mining area which has now regenerated into woodlands and field systems with some minor sections of road walking.

This walk offers exceptional views, (weather dependant), down the Loughor Estuary towards Whitford Lighthouse. It starts and finishes on the Gower Coast Path in the village of Crofty.

**An enjoyable walk through a  
varied landscape of fields, hills  
and woodland.**

**Llanmorlais Circular**

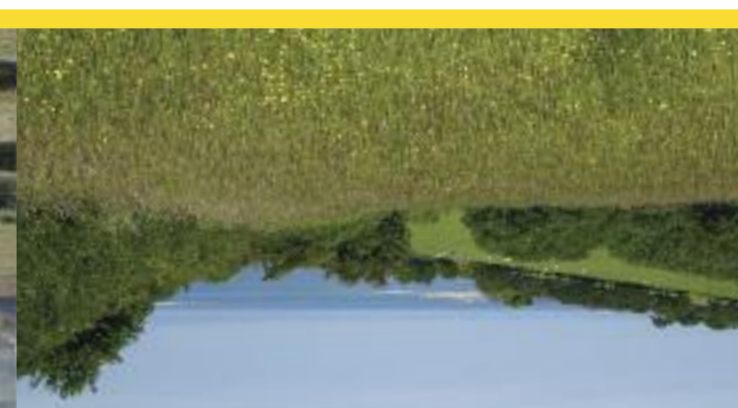


**This traditional practice was known  
as laying a hedge.**

Farmers would stock proof the fields by planting the edges with trees then cutting ¾ of the way through the tree trunk, and pushing, (laying) it over on its side. As the plants were not cut all the way through it meant they could still continue to grow, only now, the hedgerow formed a barrier to cattle and sheep.

**Look out for the gnarly, twisted  
trees. These trees are remnants  
of past farming practice.**

**Hedge Laying**



**GOWER  
COAST WALKS**

**Llanmorlais Circular**

**History**

- 1 Cwm Farm** – earliest records date back to 1762.
- 2 Llwyn Yr Awst** – Autumn Grove / Autumn Wood – late medieval farm dating back to the 1300's.
- 3** Remains of Tudor coal mines denoted by slight depressions in the field that can be seen from the viewpoint across the valley. They are the earliest recorded mining in Gower.
- 4 Wern Fabien** – mining activity from the 1580's, which would most likely have taken the form of bell pits. Around 1686 the mines would have produced somewhere in the region of 2000 tons of coal per annum.
- 5** The site of the old Crofty corn / grist mill. Earliest records for the mill are around 1625.
- 6** Site of Llanmorlais station circa 1848.
- 7** Site of old railway sidings.

**Useful Information**

**OS Explorer Map 164 Gower.**  
**Mobile phone coverage is generally good.**  
**Stout footwear is advisable.**  
**For local public transport information**  
[www.traveline-cymru.info/](http://www.traveline-cymru.info/)  
**Swansea Tourist Information Centre**  
Tel: 01792 468321  
E-mail: [tourism@swansea.gov.uk](mailto:tourism@swansea.gov.uk)  
[www.visitswanseabay.com](http://www.visitswanseabay.com)  
**Mumbles Tourist Information Centre**  
Tel: 01792 361302  
E-mail: [info@mumblestic.co.uk](mailto:info@mumblestic.co.uk)  
[www.visitmumbles.co.uk](http://www.visitmumbles.co.uk)  
**If you encounter any problems on this walk, or would like further information on public rights of way, please contact the Countryside Access Team.**  
**Countryside Access Team**  
Tel: 01792 635230 or 01792 635746  
E-mail: [countrysideaccess@swansea.gov.uk](mailto:countrysideaccess@swansea.gov.uk)  
[www.swansea.gov.uk/countrysideaccess](http://www.swansea.gov.uk/countrysideaccess)



**Gower Coast Walks**

**Reporting problems:** This route follows public paths on which you have the legal right to walk. If you have any difficulties, please report them to the Countryside Access Team.

**Distance:** The walk is approximately 3 ¾ miles (6km). You can begin at any point and walk in any direction but to follow the directions, start on the Marsh Road and walk clockwise.

**Time:** Allow 2-4 hours depending upon fitness.

**Terrain:** The walk follows field edges and wooded areas which can be uneven and muddy. There are some steep sections and some stiles to cross. Be prepared and wear appropriate clothing and footwear for the weather conditions.

**Safety:** There are a couple of sections of country lane walking and a busy road to cross.

**Refreshments:** There is a pub and post office in Crofty and public toilets just down the road in Penclawdd.

**OS Map:** OS Explorer Map 164 Gower.



**The walk is marked with these waymarks**



**The walk links to the Gower Coast path which is marked with these waymarks**

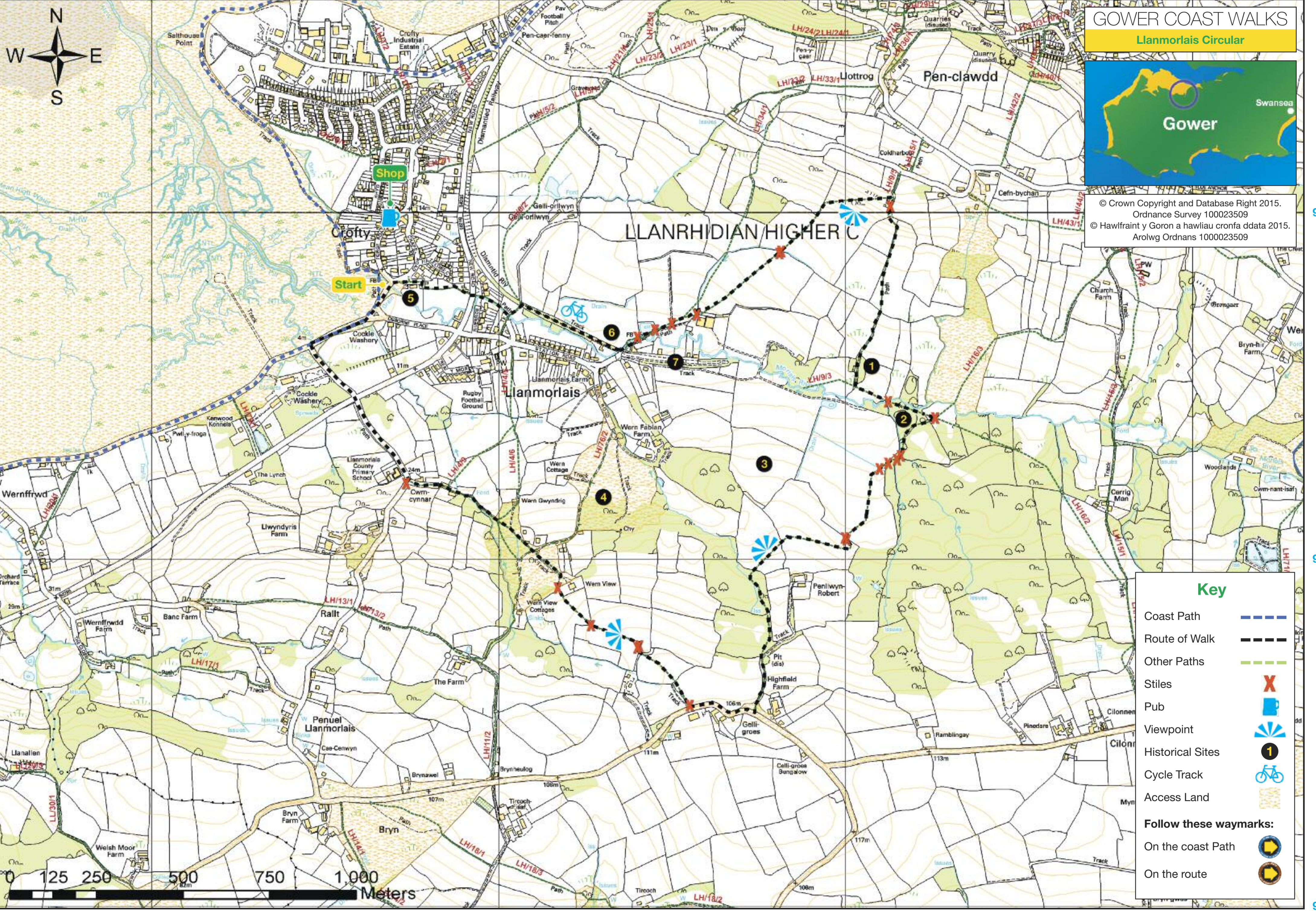
**Walk start point – Grid ref: SS526947  
The playground on the marsh**

Walk inland up the narrow footpath until you meet New Road. **Take care crossing the road** and continue along the footpath. At the end of the gardens, turn left up the tarmac track, and then turn right when you get to the cycle track. Follow the cycle track to the end, then turn left onto a farm track.

Follow this for a short distance then cross the river using the footbridge. Follow the path over a number of stiles passing the farm buildings on your right. Cross a bridge and continue diagonally across the field to another bridge. Continue across the field towards the corner of the fence line at the bottom of the hill and follow the waymarked route up to the top of the hill.

**Take time to turn around and enjoy the views down the estuary.**





# GOWER COAST WALKS

## Llanmorlais Circular



© Crown Copyright and Database Right 2015.  
 Ordnance Survey 100023509  
 © Hawlfraint y Goron a hawliau cronfa ddata 2015.  
 Arolwg Ordnans 1000023509

### LLANRHIDIAN/HIGHER C

### Key

- Coast Path
- Route of Walk
- Other Paths
- Stiles
- Pub
- Viewpoint
- Historical Sites
- Cycle Track
- Access Land
- Follow these waymarks:**
- On the coast Path
- On the route



95

94

93